

I Website

The official website is now available (<http://rrc.ip-korea.org/>)



Main page

Facility Reservations

Bioresource Distribution

Make reservations for BL3 and ABL3 facilities, or search bioresources through our website!

I Procedure for Using Facility



* Note: No access at night / Weekend access will be granted under the supervision if prior approval is obtained

I Education and Training

Training for New Users

Theoretical training

- Mandatory: 4 hours or more

Practical training

- Experienced user: 4 times (in 2 weeks)
- New user: 9 times (in 2 weeks)

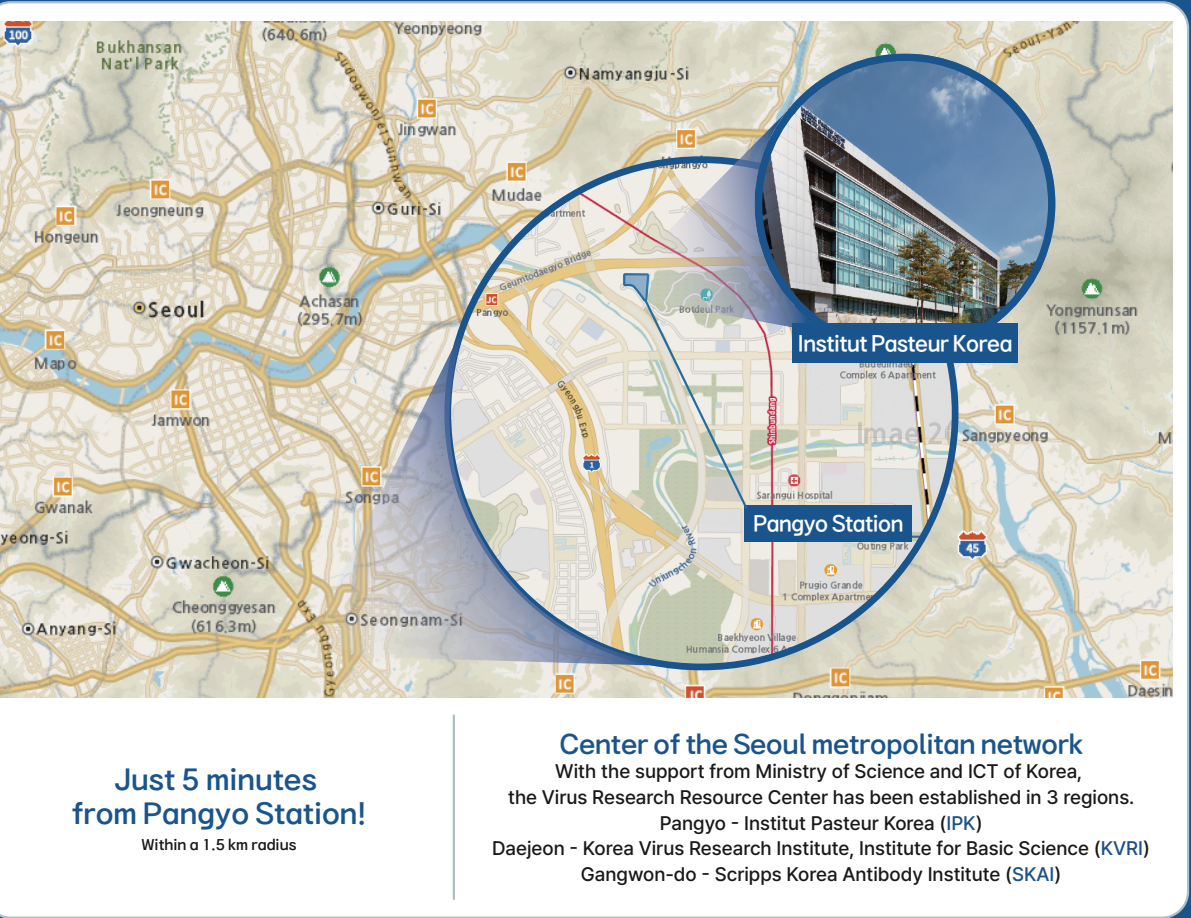
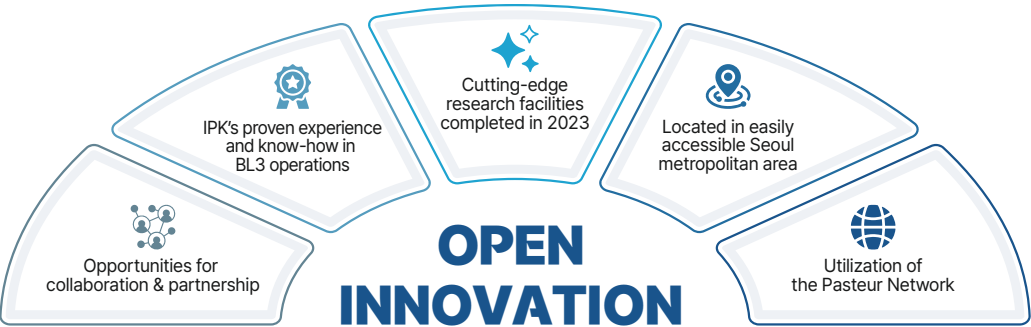
Final Test

- Proficiency field test

Mandatory Training

- (Common) Legally required training under the Living Modified Organisms Act and the Infectious Disease Control and Prevention Act
- (ABL3) Training on the use and management of laboratory animals

I Benefits of Using IPK Facilities

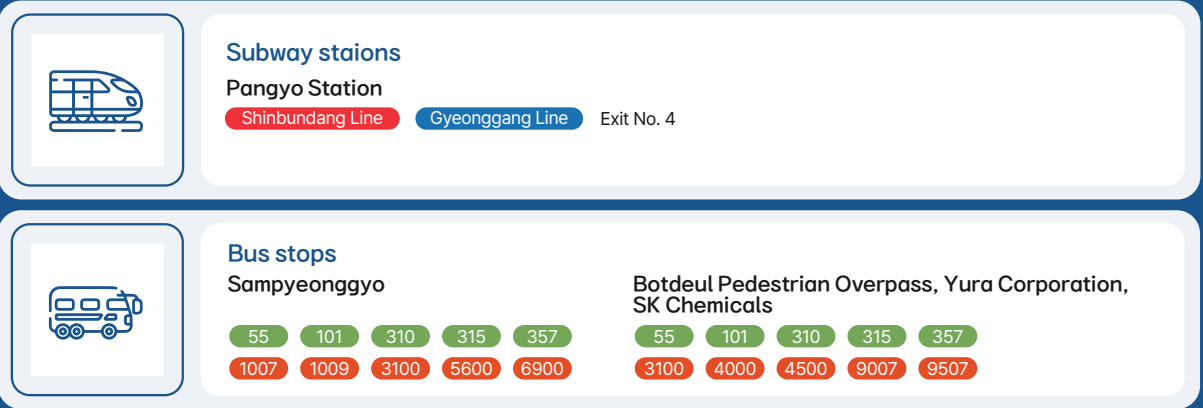


Just 5 minutes
from Pangyo Station!
Within a 1.5 km radius

Center of the Seoul metropolitan network
With the support from Ministry of Science and ICT of Korea, the Virus Research Resource Center has been established in 3 regions.
Pangyo - Institut Pasteur Korea (IPK)
Daejeon - Korea Virus Research Institute, Institute for Basic Science (KVRI)
Gangwon-do - Scripps Korea Antibody Institute (SKAI)

I Directions

Virus Research Resource Center, Institut Pasteur Korea 6F, 16 Daewangpangyo-ro 712beon-gil, Bundang-gu, Seongnam-si, Gyeonggi-do, Republic of Korea (Postal Code: 13488)



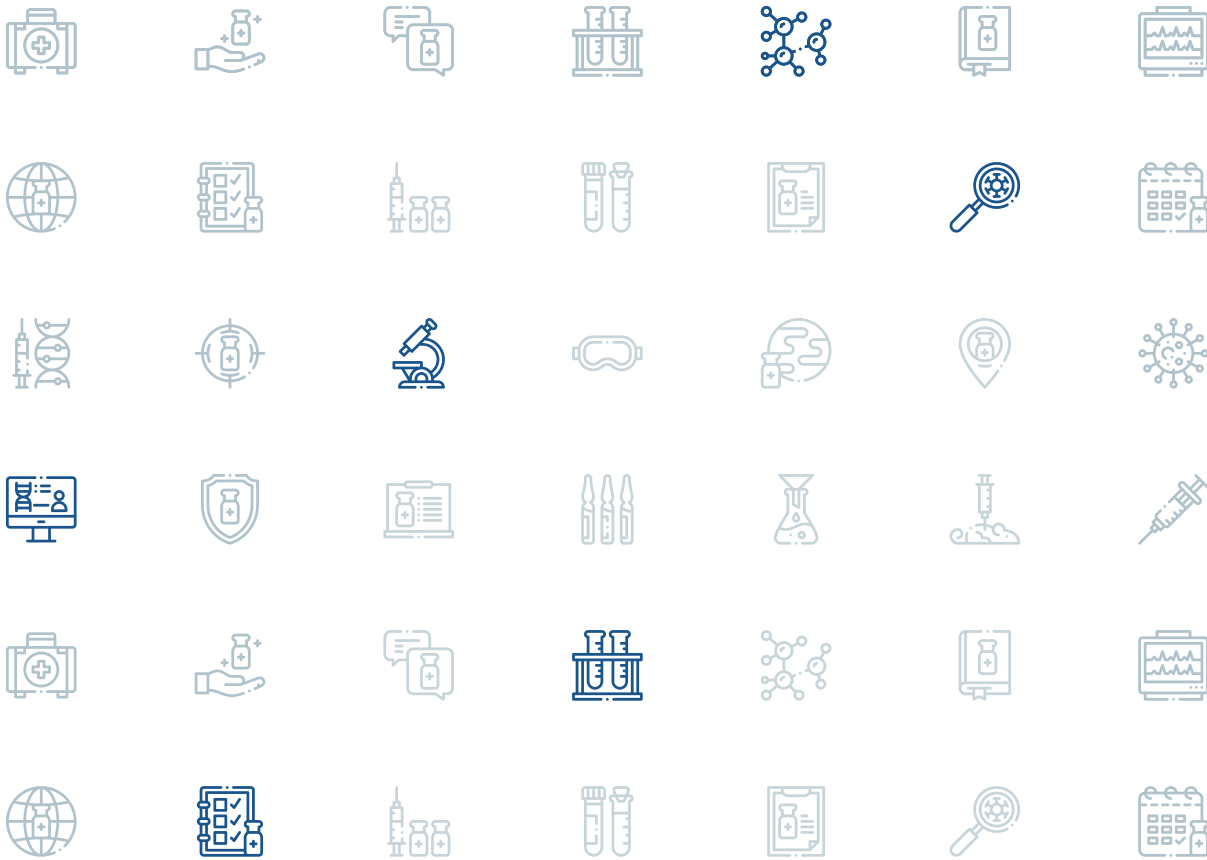
Institut Pasteur Korea
Virus Research Resource Center

Tel
E-mail
Homepage

+82-031-8018-8099
RRCS_Team@ip-korea.org
(IPK) <https://www.ip-korea.org/>
(IPK RRC) <https://rrc.ip-korea.org/>

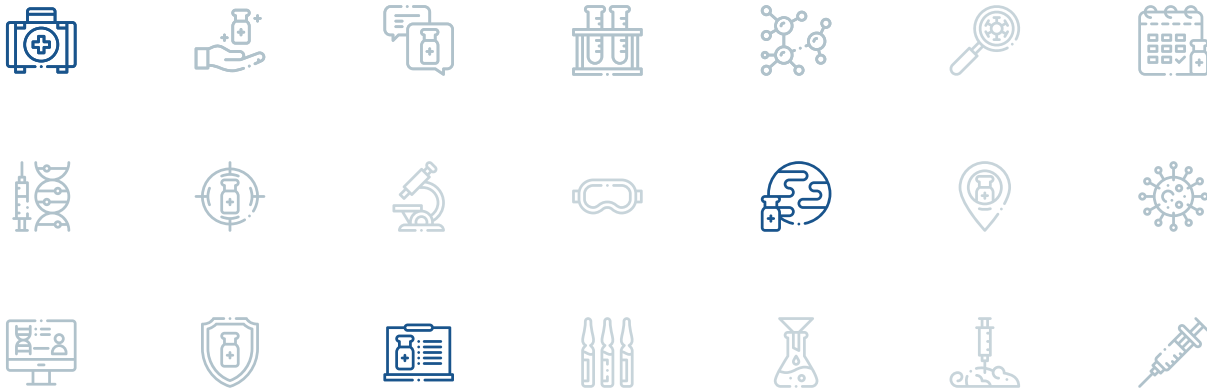


Institut Pasteur Korea



Virus Research Resource Center

Institut Pasteur Korea

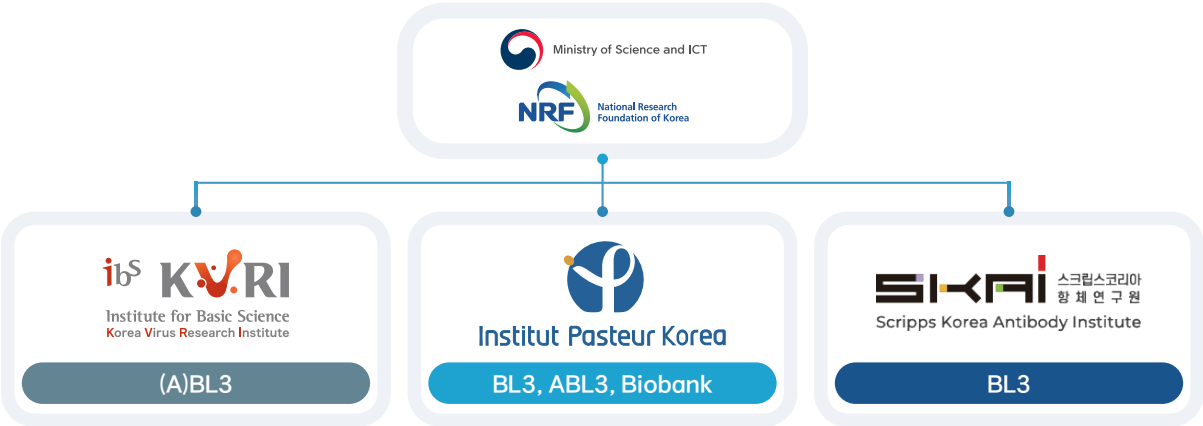


I Greetings from CEO

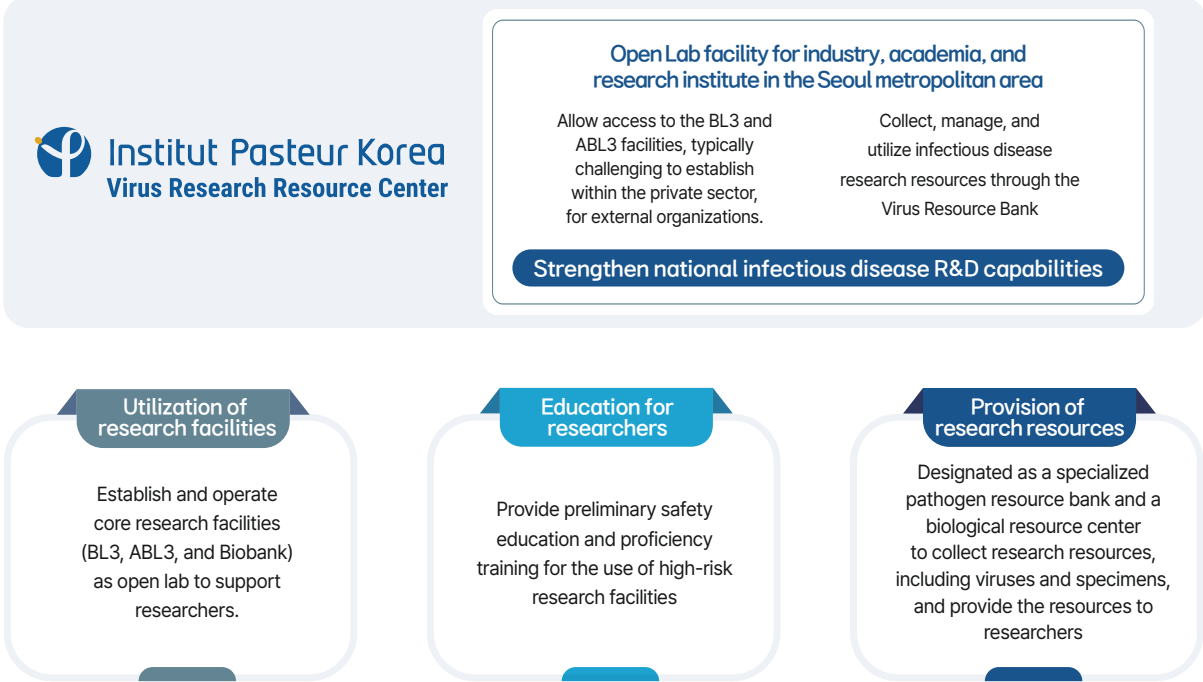
Institut Pasteur Korea Virus Research Resource Center serves as critical research infrastructure for basic research on viruses. We are equipped with BL3, ABL3, and Biobank, which are not easily accessible in the private sector. Our center allows external researchers to use the facilities as open labs to further increase national infectious disease R&D capabilities and create synergy through collaborative research.

By offering advanced infrastructure and services, the Virus Research Resource Center will play a leading role in infectious disease research in Korea and make every effort to become the center of infectious disease research activities, especially as the hub of a regional network in the Seoul metropolitan area.

I Implementation



I Operational Directions



I Institut Pasteur Korea Virus Research Resource Center



I Facilities in Virus Research Resource Center

Facility name	Area	Key facilities
BL3	217.9m ²	4 Labs, 1 Equipment Room, 1 Freezer Room
ABL3	284.6m ²	3 Labs, 2 Breeding Rooms, 2 Necropsy Rooms, 1 Freezer Room
Biobank*	149m ²	3 Labs, 2 Preservation Rooms
Others	1,001m ²	Preparation Room, BL2, Air Conditioning Room, UPS Room

* Licensed as a human material bank and designated as a specialized pathogen resource bank and a biological resource center

Pathogens used
IBC-approved Risk Group 3 (or lower) pathogens or Living Modified Organisms (LMOs)

Animals handled
Mouse

I Facility Usage Fee

Facility name	Usage Fee (KRW)	Remarks
ABL3	1,260,000 (per day)	1 Lab + 1 Breeding Room + 1 Necropsy Room
BL3	630,000 (per day)	1 Lab
BL2	300,000 (per day)	1 Lab

1. Up to 80% of a discount rate available depending on the type of organization using the facilities (Contact us for more details.)

2. Additional fees in training, supplies, sterilization, fumigation, and others may occur.

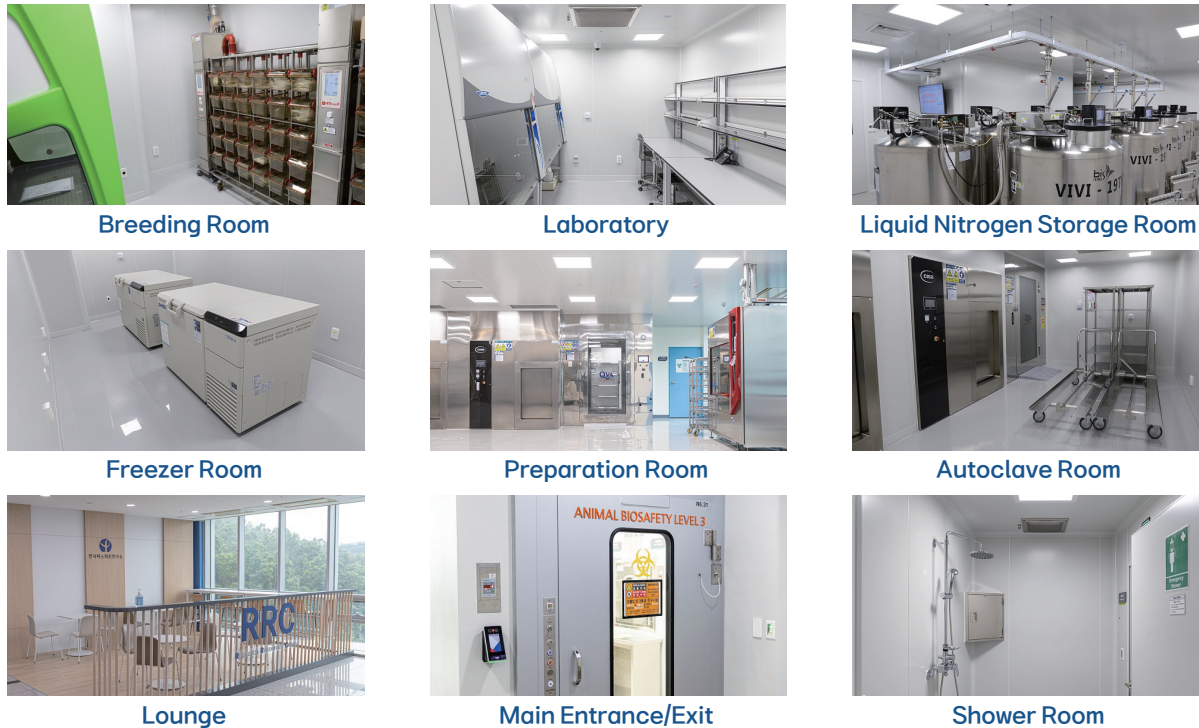
I Biobank (Global Infectious Disease Specimen Bank, GISB)



Global Infectious Disease Specimen Bank

Collect and distribute infectious disease research resources (specimens and pathogens) isolated from infectious disease patients in Korea and around the world

I Research Facilities



*The facility is also equipped with UV pass boxes, UV chambers, CO2 incubators, autoclaves, fumigation chambers, wastewater treatment units and more.